



INTERNATIONAL
CHAIN AND CABLE

PASSENGER STYLE TIRE INSTALLATION INSTRUCTIONS

CABLE CHAINS INSTRUCTIONS



1. DRAPE CABLE OVER TIRE



Drape cable over tire after laying cable flat by tire and inspecting it for any kinks. Set cable etched TIRE SIDE (1A) against the tire wall. Place the keyhole latch (1B) toward the front of the tire, and beaded cable ends (1C) toward the back of the tire.

2. POSITION CABLE



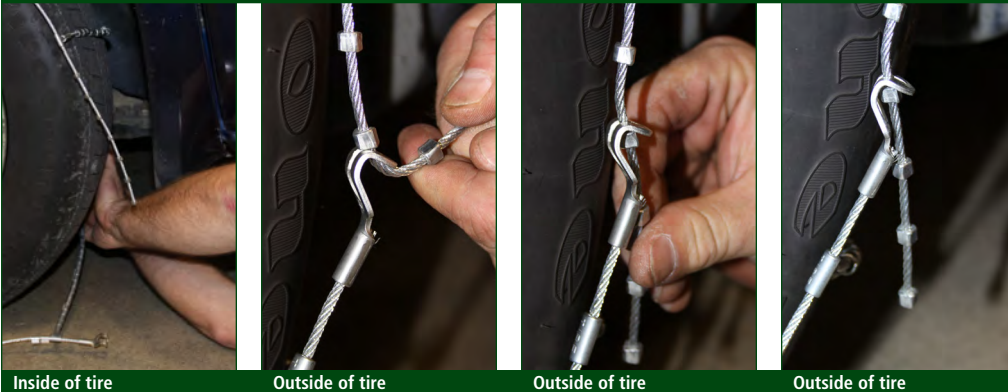
Position cable to be centered on tire treads. Straighten cross cables to lay horizontal across tire treads. Tuck first cross cable under the front of your tire in preparation to roll over them.

3. ROLL VEHICLE FORWARD



Roll vehicle forward over cable until beaded cable ends are positioned midway on the tire and keyhole latch (3A) is easily accessible.

4. ATTACH CABLE



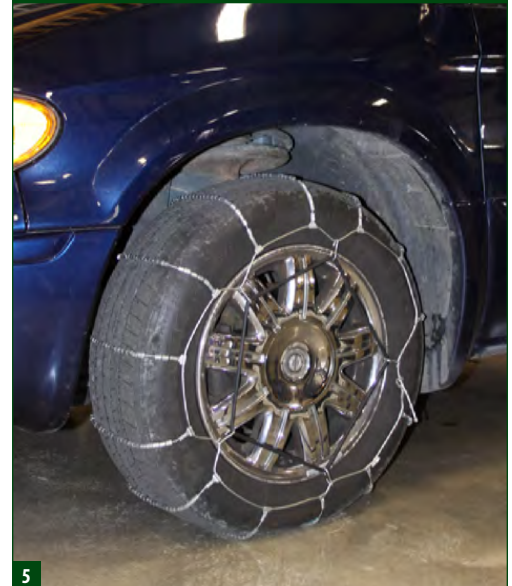
4A. Attach cable inside first then outside following 4B-4D.

4B. Place beaded cable end through keyhole latch and pull to tighten.

4C. Keep pulling cable through keyhole latch until tire cable fits tightly around tire.

4D. Secure beaded cable in keyhole latch. REPEAT STEPS 4B-4D on the inside of tire, and out until cable fits snug.

5. TEST DRIVE. INSPECT. RE-TIGHTEN.



5

6. ADD CHAIN ADJUSTERS



Add chain adjusters for a more secure fit and to extend the life of your chains.

DRIVE SAFE—DO NOT

- Deflate tires to install tire chains.
- Drive over fasteners and hooks while installing chains.
- Install tire chains the wrong way.
- Install broken tire chains.
- Drive with broken tire chains.
- Drive with snow chains on bare pavement.
- Use tire chains when towing other vehicles.
- Hit curbing with tire chains on.
- Accelerate rapidly.
- Spin tires.
- Exceed 30 mph.



5A

Test drive, inspect, re-tighten tire cables so they fit snug around the tire. REPEAT STEPS 4B-4D. Snap hanging beaded cable ends into the two clips on the side cable (5A).